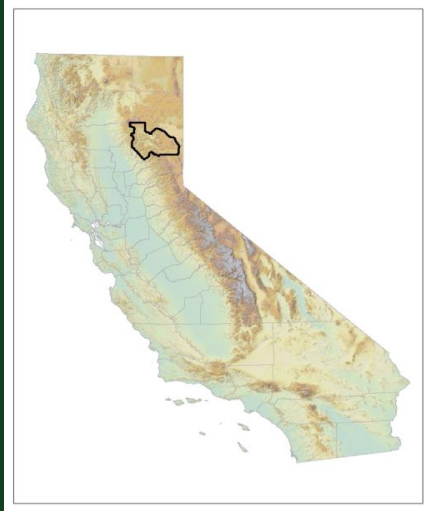


South Lassen Watersheds Group

*SCALE Update:
West Lassen Headwaters Project
July 2023*

Sierra Institute for Community and Environment

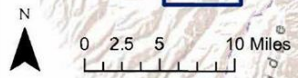
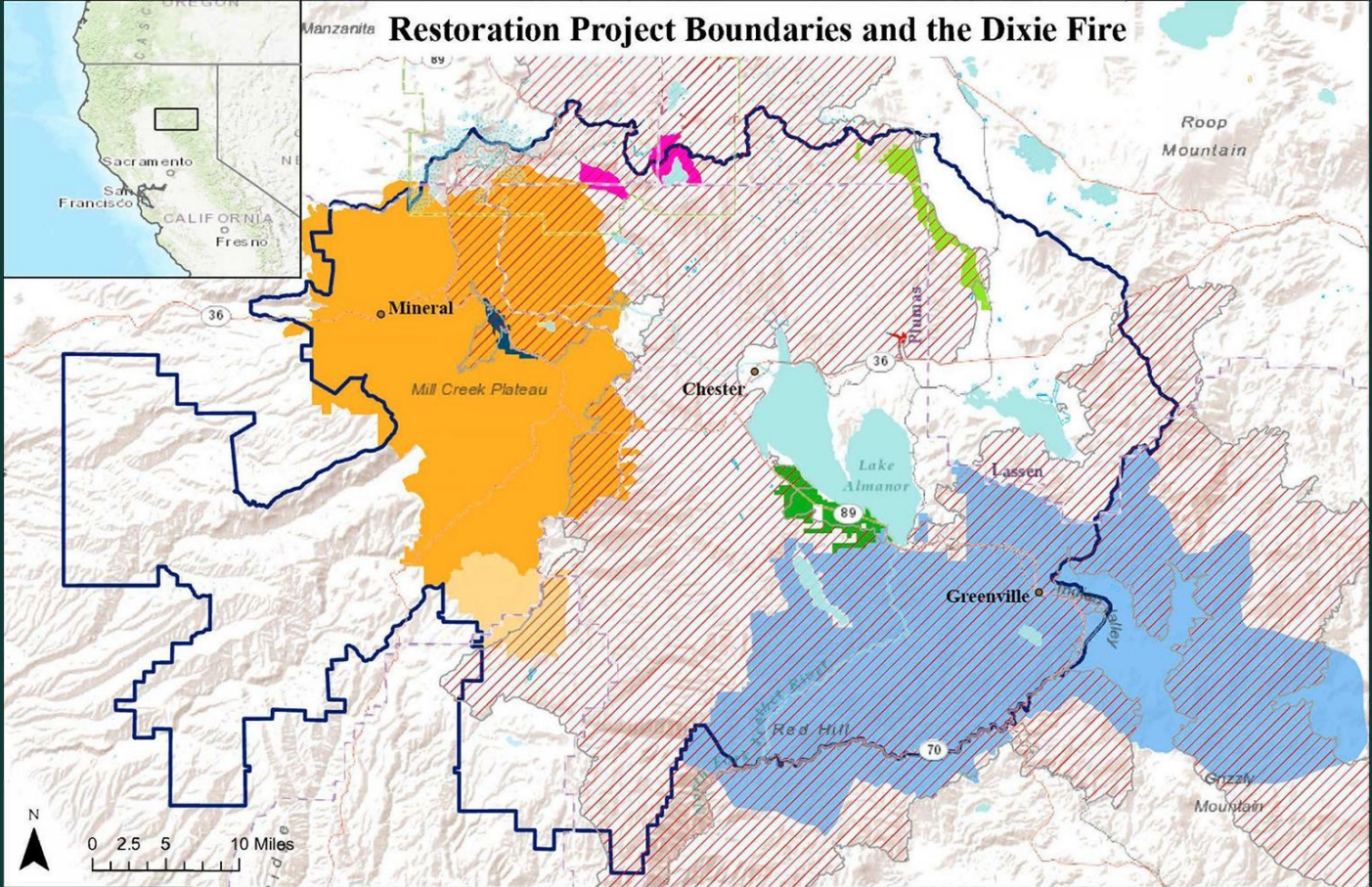
PLUMAS COUNTY





TAYLORSVILLE




Giving voice to rural communities, and advancing collaborative practices and landscape-scale work

Restoration Project Boundaries and the Dixie Fire








 South Lassen Watersheds Group Boundary
 Dixie Fire


Projects in Planning Phase

-  West Lassen Headwaters Project
-  Upper Butte Creek Forest Health Project
-  Plumas North Fork Communities

Projects in Implementation Phase

-  West Shore Project
-  Robbers Creek Project
-  Rock Creek Restoration Project
-  Childs Meadow Restoration Project
-  North Fork Feather River Headwaters Project


West Lassen Headwaters Project

 West Lassen Headwaters Project

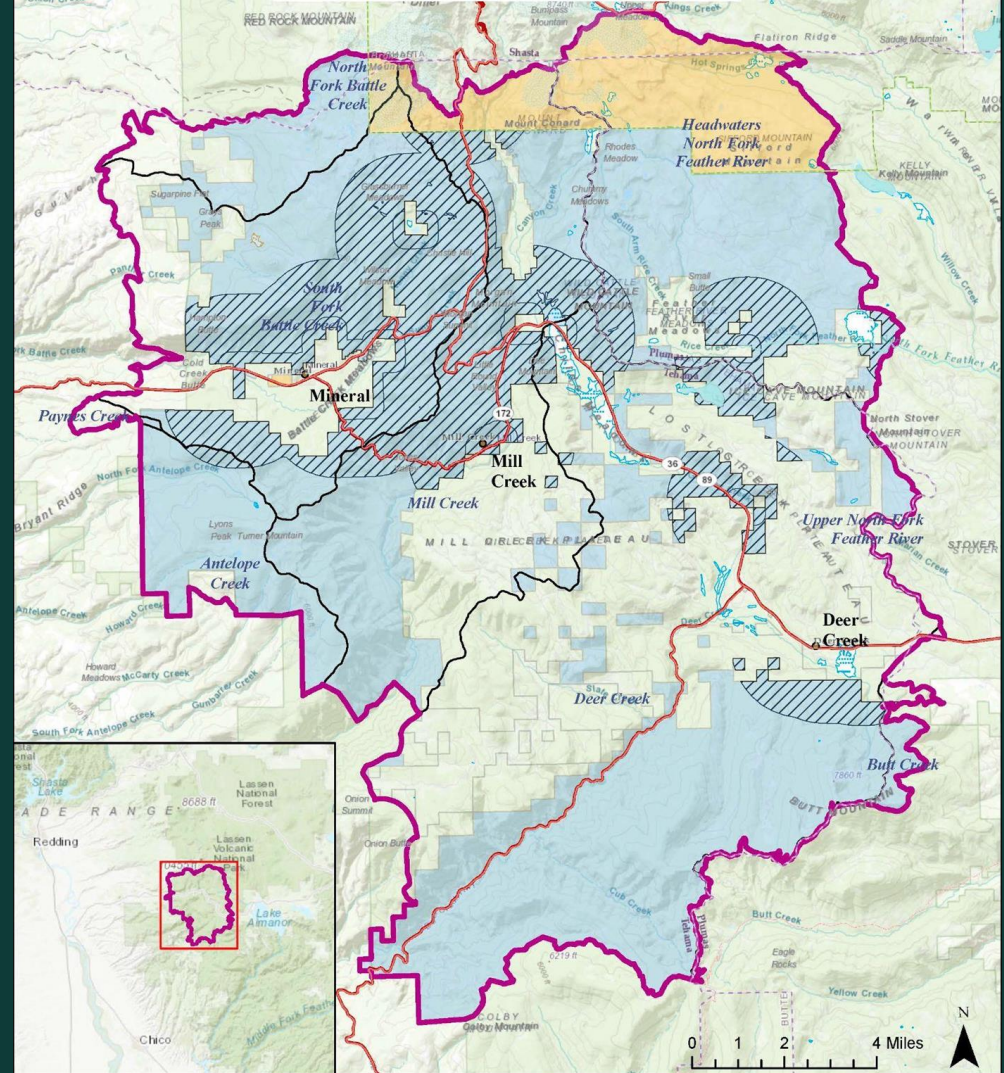
 Lassen Volcanic National Park

 Lassen National Forest

 Priority Treatment Areas*

 HUC 10 Watersheds

 Highway



West Lassen Headwaters Project Collaboration

Project Partners:



Informed By:

SOUTH LASSEN WATERSHEDS GROUP
> OVER 25 DIFFERENT MEMBER GROUPS

Project Update

- ❖ **Role of Partners**
- ❖ **Interface with the South Lassen Watersheds Group**
- ❖ **Challenges**
- ❖ **Next Steps**

Role of Partners

- ❖ Promote peer-learning
- ❖ Community Outreach
- ❖ Partner-facilitated ID Team Meetings
- ❖ Partner-led NEPA writing



Project Interface with the SLWG

- ❖ Special topic collaborative workshops
- ❖ Field tours
- ❖ Updates at bimonthly collaborative meetings



Left: Discussing the Dixie Fire at the Visitor's Center in Lassen Volcanic NP on the SLWG Field Tour in June 2022



Right: Project team discussing potential actions in a fen along Wilson Lake Road

Challenges

- ❖ Large-landscape data collection
- ❖ Discomfort with condition-based NEPA
- ❖ Need to consider the whole system through implementation
 - Biomass; workforce
- ❖ **Shifting of priorities and restructuring post-Dixie Fire**
- ❖ **Navigating the USFS Program of Work and allocation of resources**

Next Steps

- ❖ **Public Scoping:
Proposed
Action**
- ❖ **Environmental
Analysis**
- ❖ **Adaptive
Management &
Implementation
Plan**



Thank you to our Project Partners & Funders!

