

Healthy Eldorado Landscape Partnership



MICHELLE WOLFGANG

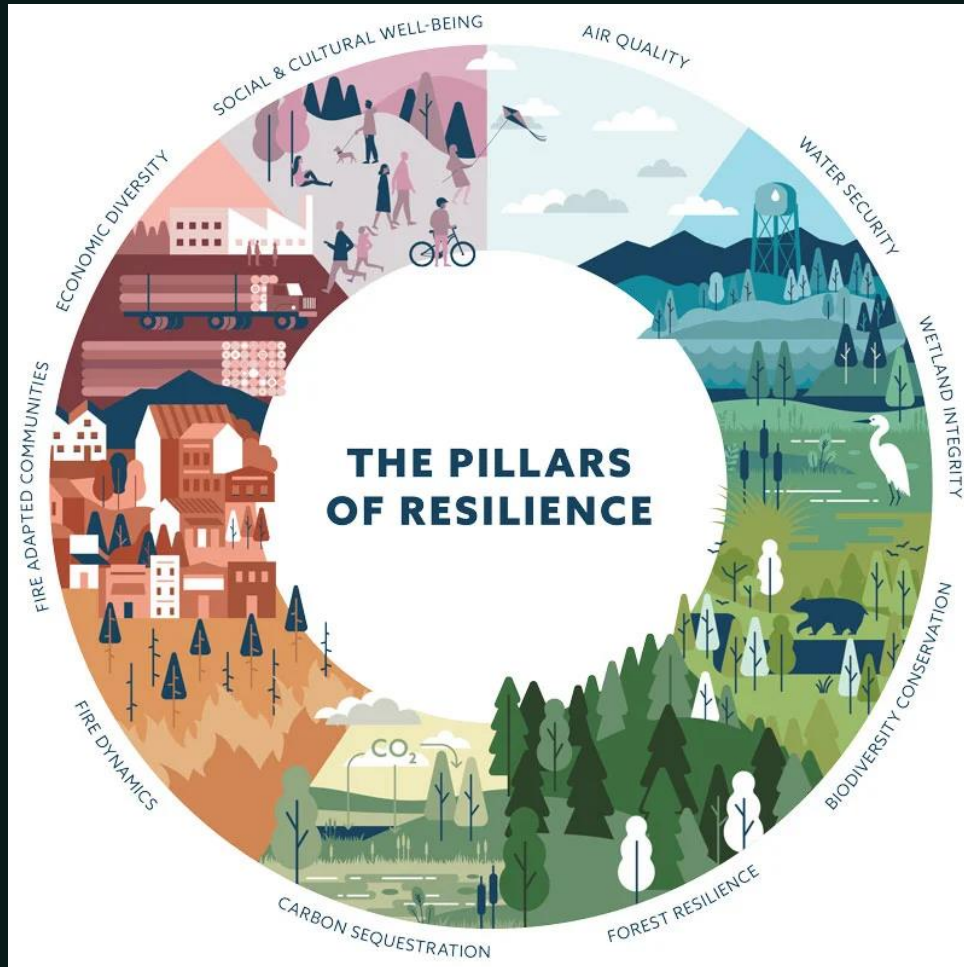
U.S. FOREST SERVICE ELDORADO NF

SABRINA CHUI

BLUE FOREST CONSERVATION



On the path to a resilient Eldorado NF



Challenges to achieving resilience



Forest Service and partner staffing capacity



Locally absent biomass infrastructure



Competition; availability of project funding sources



Public sentiment of fuels reduction methods

On the path to a resilient Eldorado NF

Healthy Eldorado Landscape Partnership

Focus on shovel-ready project progress / adjacency of projects in planning

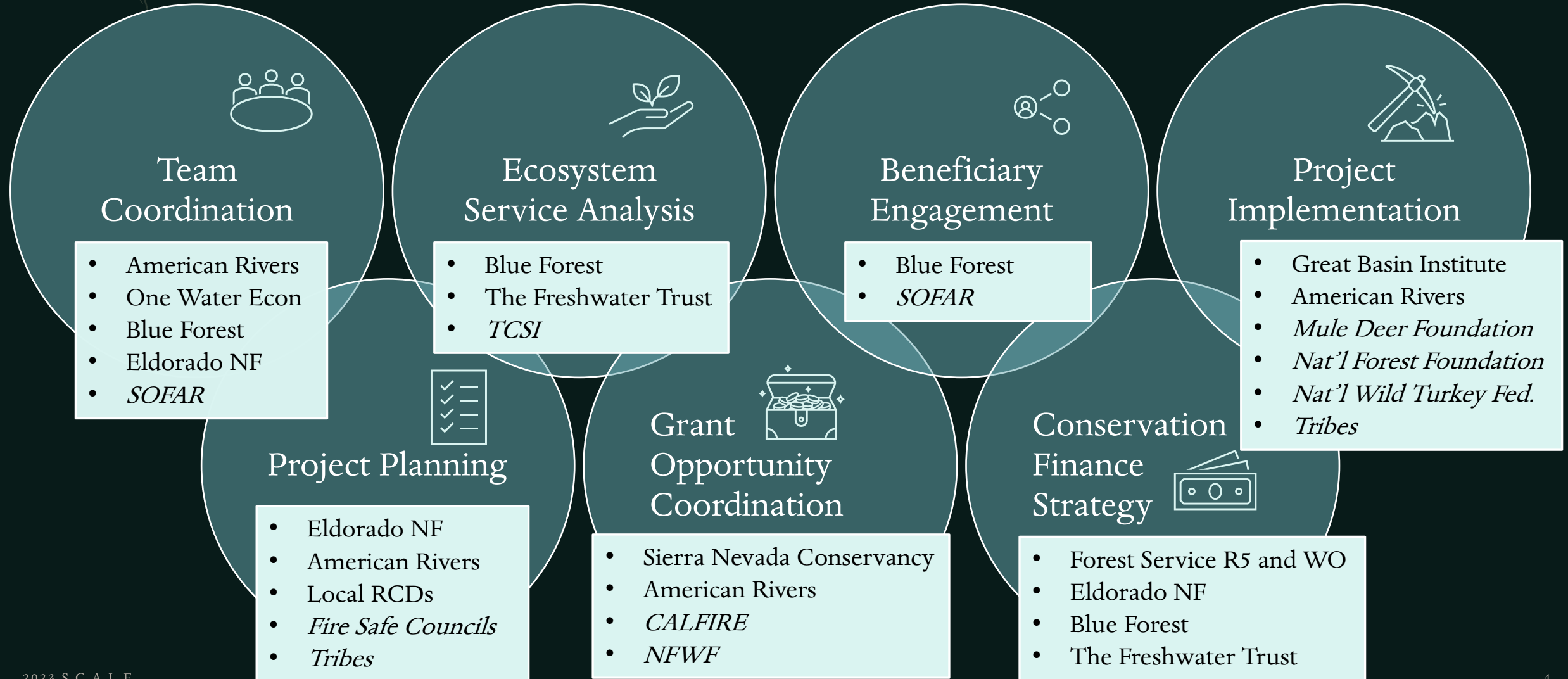
+ Create a landscape-based ecosystem service project portfolio

+ Align project activities to quantifiable metrics of resilience

+ Stitch multiple funding sources to accomplish shovel-ready work

+ Shared partner- and FS-led planning + implementation activities

Orchestra of partners roles and actions

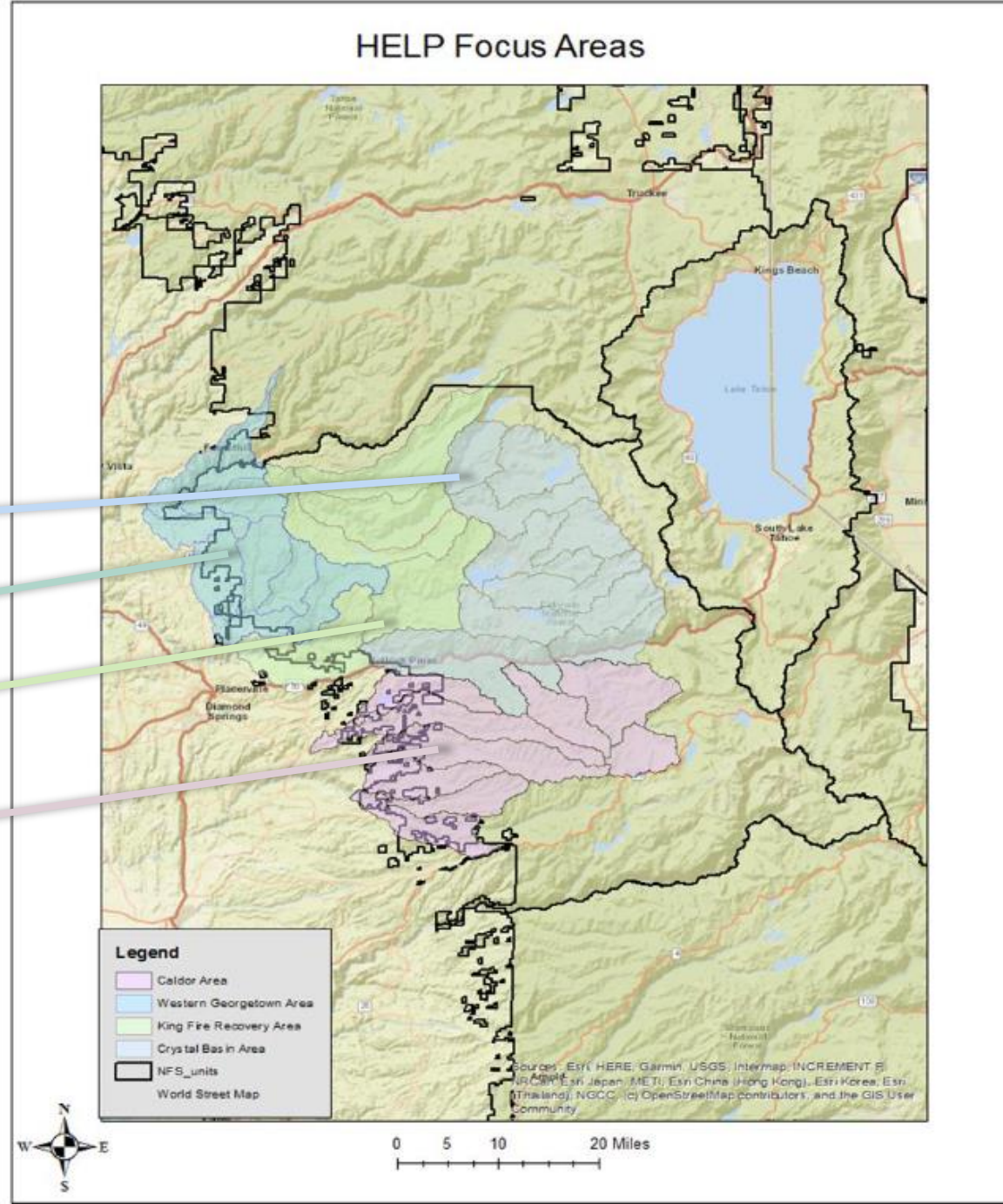


HELP Focus Areas



Focus Areas

- 1. Crystal Basin
- 2. Western Georgetown
- 3. King Fire recovery
- 4. Caldor Fire / Cosumnes



Timeline: on the path to a resilient Eldorado NF



Thank you

Michelle Wolfgang

Partnership Coordinator

Michelle.Wolfgang@usda.gov

[U.S. Forest Service, Eldorado NF](#)

Sabrina Chui

Project Analyst

Sabrina@blueforest.org

[Blue Forest Conservation](#)

