

Going to Scale:  
Implementing  
Landscape-Scale  
Restoration

Stanislaus National Forest

YSS

Tuolumne County





# Master Stewardship Agreement (MSA) Partnerships

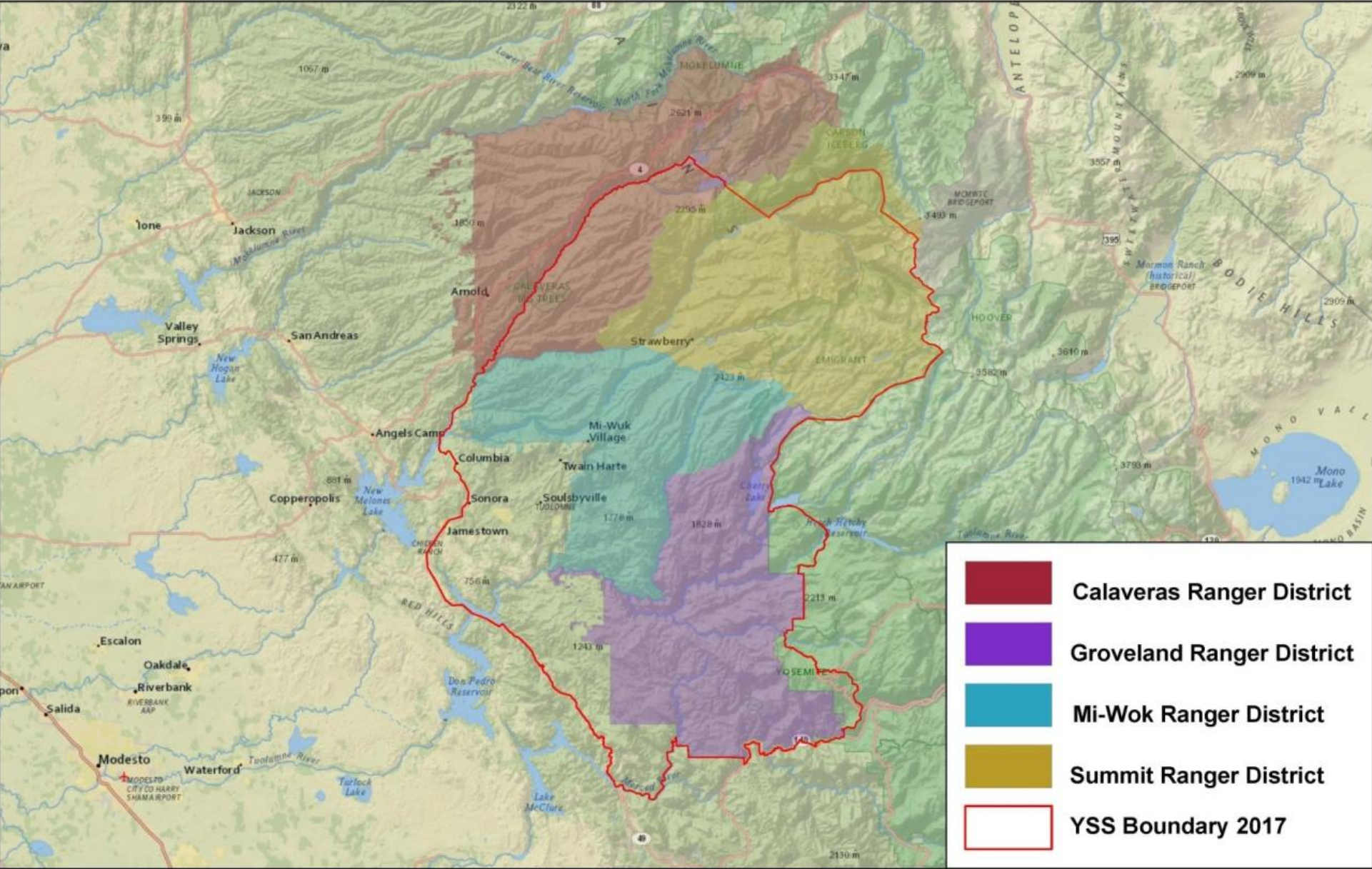
- USFS—Stanislaus National Forest
- YSS—Yosemite Stanislaus Solutions
- Tuolumne County
- Tuolumne River Trust
- Private Contractors / Industry






- Formed in 2010
- Highly diverse coalition of interests
- Common goal of restoring and maintaining:
  - healthy forests and watersheds
  - fire-safe communities
  - sustainable local economies
- Science-based approach
- Years of established trust

# YSS/MSA Boundary



	<b>Calaveras Ranger District</b>
	<b>Groveland Ranger District</b>
	<b>Mi-Wuk Ranger District</b>
	<b>Summit Ranger District</b>
	<b>YSS Boundary 2017</b>



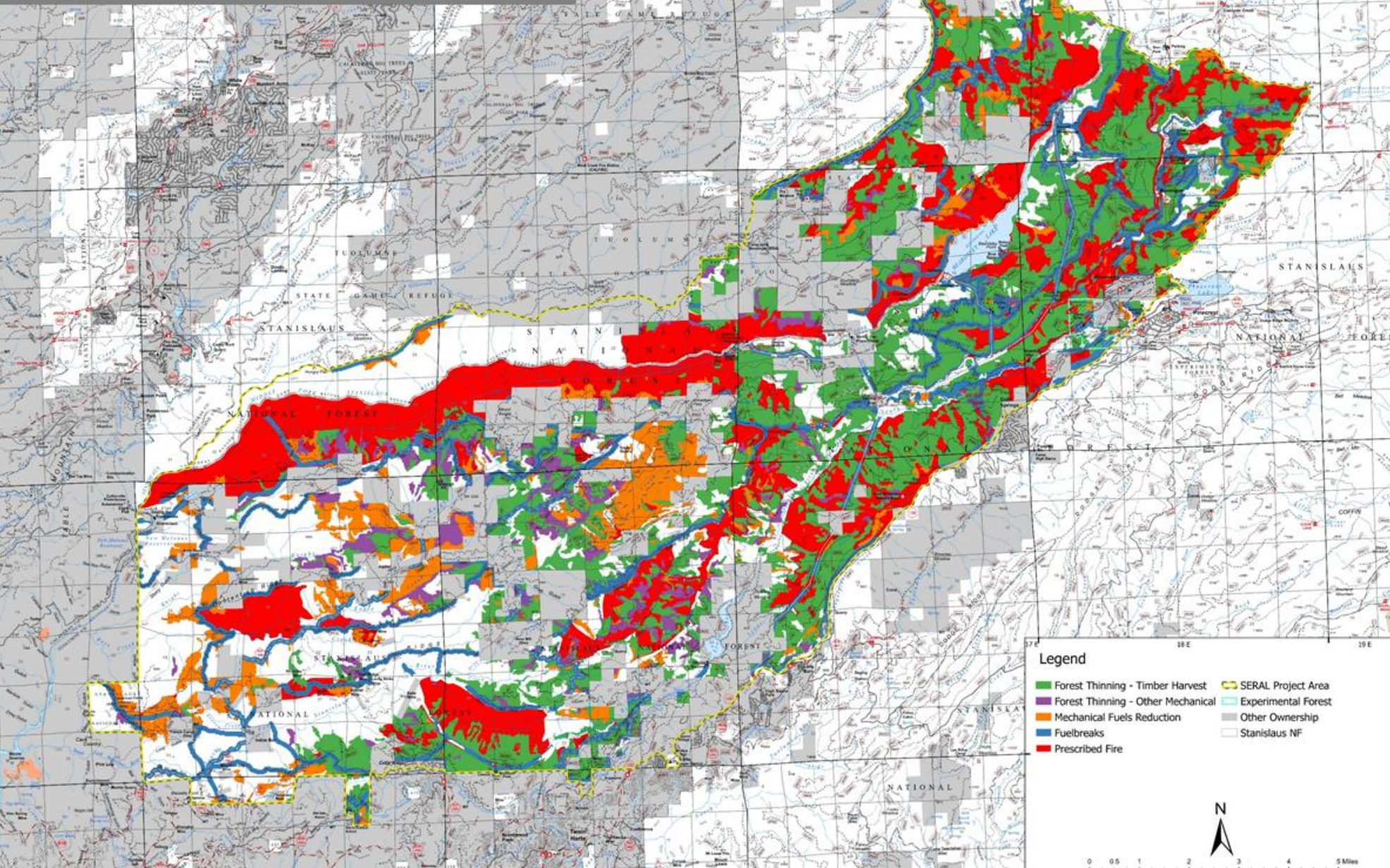
Yosemite Stanislaus Solutions

1:500,000





## Landscape Resilience Treatments



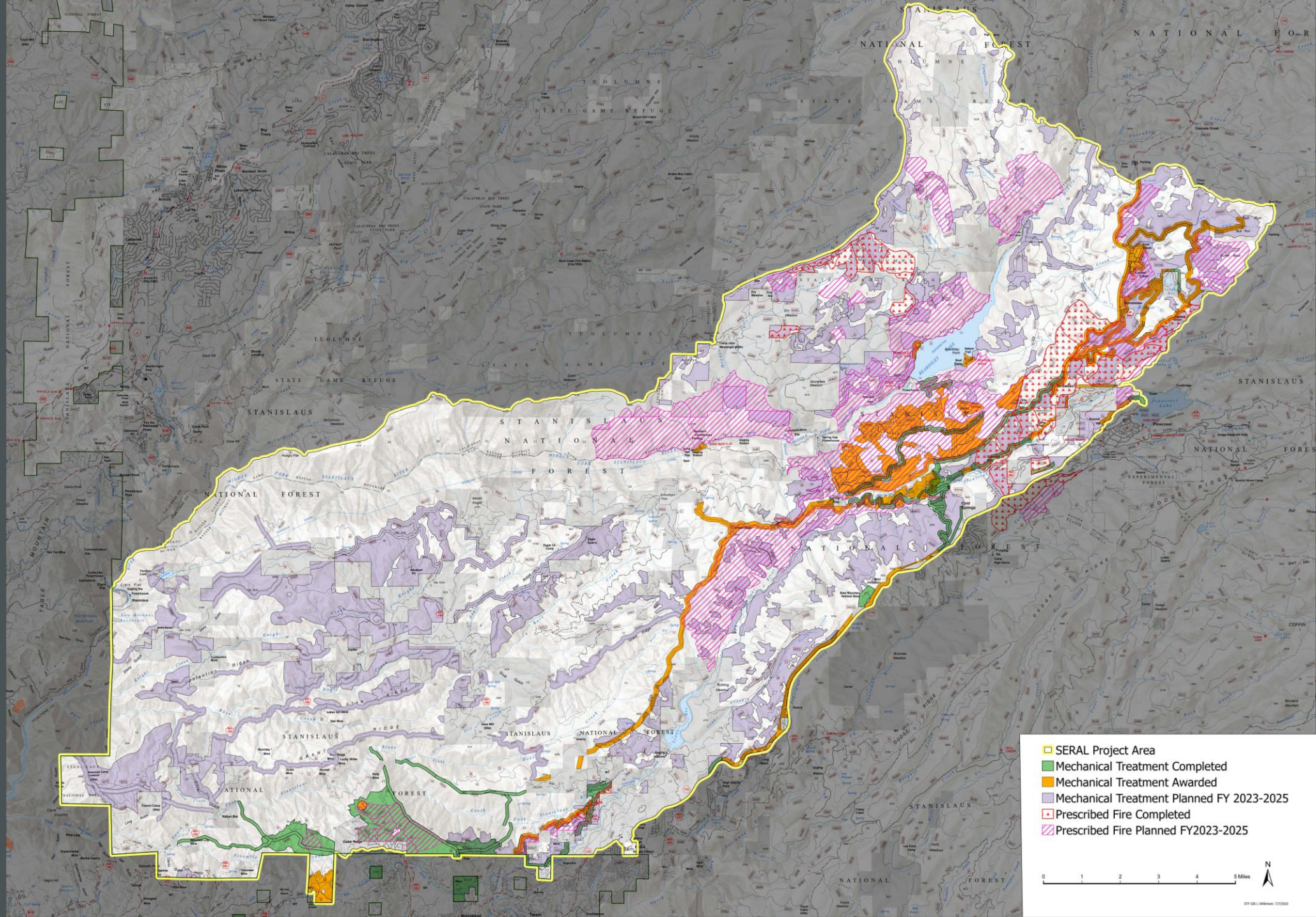
# SERAL Project

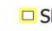



RODs signed  
in March,  
June and  
August 2022



# SERAL Projects 2022-2025

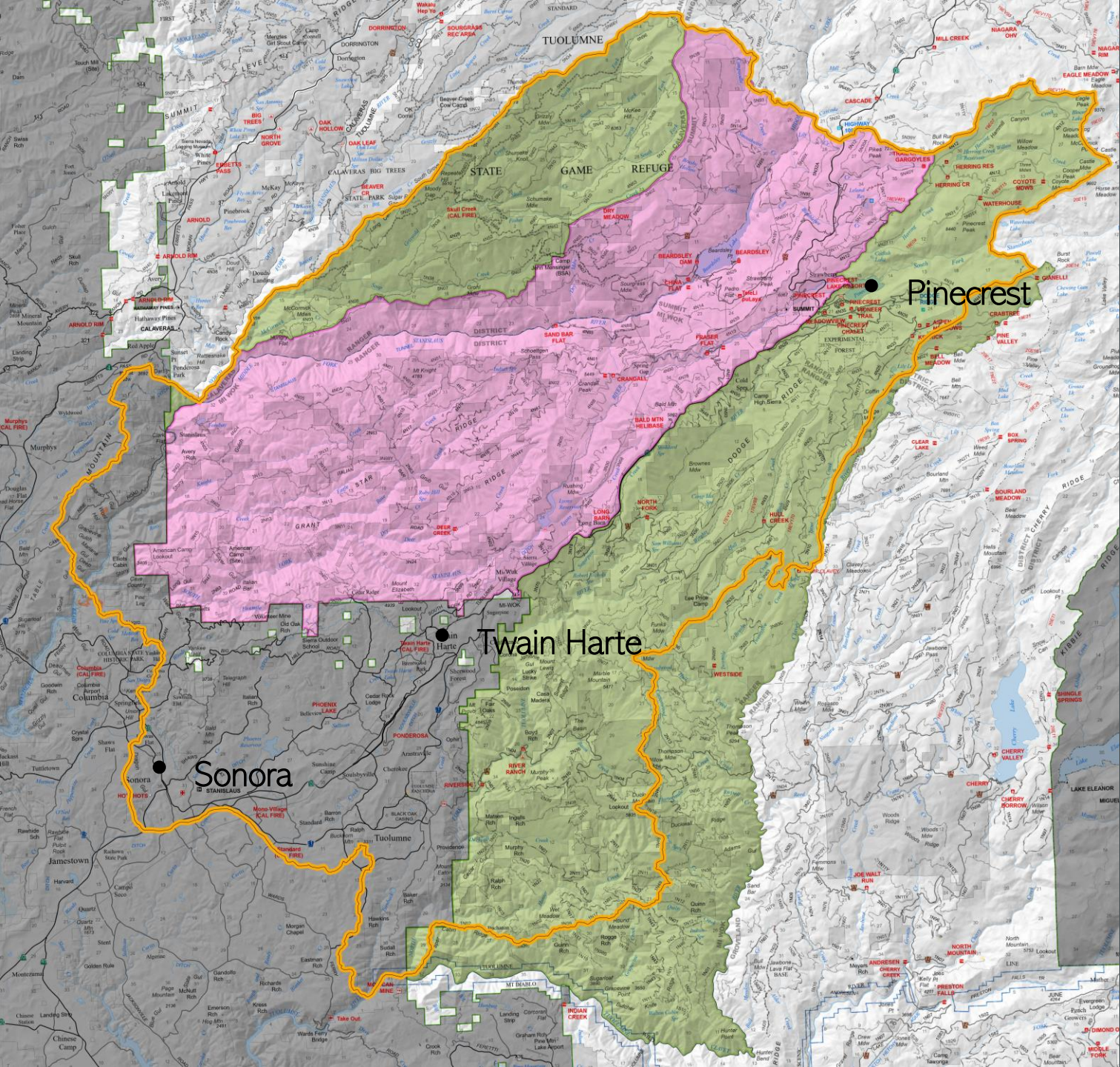
-  Mechanical Completed
-  Rx Fire Completed
-  Awarded
-  Mechanical Planned
-  Rx Fire Planned



-  SERAL Project Area
-  Mechanical Treatment Completed
-  Mechanical Treatment Awarded
-  Mechanical Treatment Planned FY 2023-2025
-  Prescribed Fire Completed
-  Prescribed Fire Planned FY2023-2025







# What's Next?

- Stanislaus Landscape Boundary
  - 245,000 acres
- SERAL Landscape
  - 118,000 acres
- SERAL 2.0 Landscape
  - 160,000 acres

# Achieving Scale

## Environmental Compliance and Implementation

### REASONS FOR SUCCESS

- YSS support for large landscape NEPA
- SB 901—CEQA Exemption
- 28 pre-qualified forestry/fuel reduction companies
- Local markets
- All Lands Approach—collaboration with Tuolumne County OES, Tuolumne Fire Safe Council and Bureau of Land Management on coordinated projects

### CHALLENGES

- Sustained funding—moving away from competitive grants
- AB 338—Projects subject to prevailing wage





Thank you