

# Collaborative Impact:

Preliminary research on the pace and scale of forest restoration in California

Lauren Burton

[LBurton@SierraInstitute.us](mailto:LBurton@SierraInstitute.us)



# INTRODUCTION

- Tracking success and lessons learned
- What is missing?
- How are YOU tracking progress?

For feedback during the meeting:  
sierrainstitute.scale@gmail.com  
(530) 616-8459

For feedback after the meeting:  
LBurton@SierraInstitute.us  
(530) 284-1022

The data presented here was retrieved from the USFS activities datasets\*. We have made efforts to reduce redundancy and reflect activities relevant to collaboratives present to the best of our knowledge. However, as a result, these numbers may not be consistent with those reported elsewhere. This is only a preliminary look at data available to SCALE groups and is intended to promote discussion of how we track restoration activities.

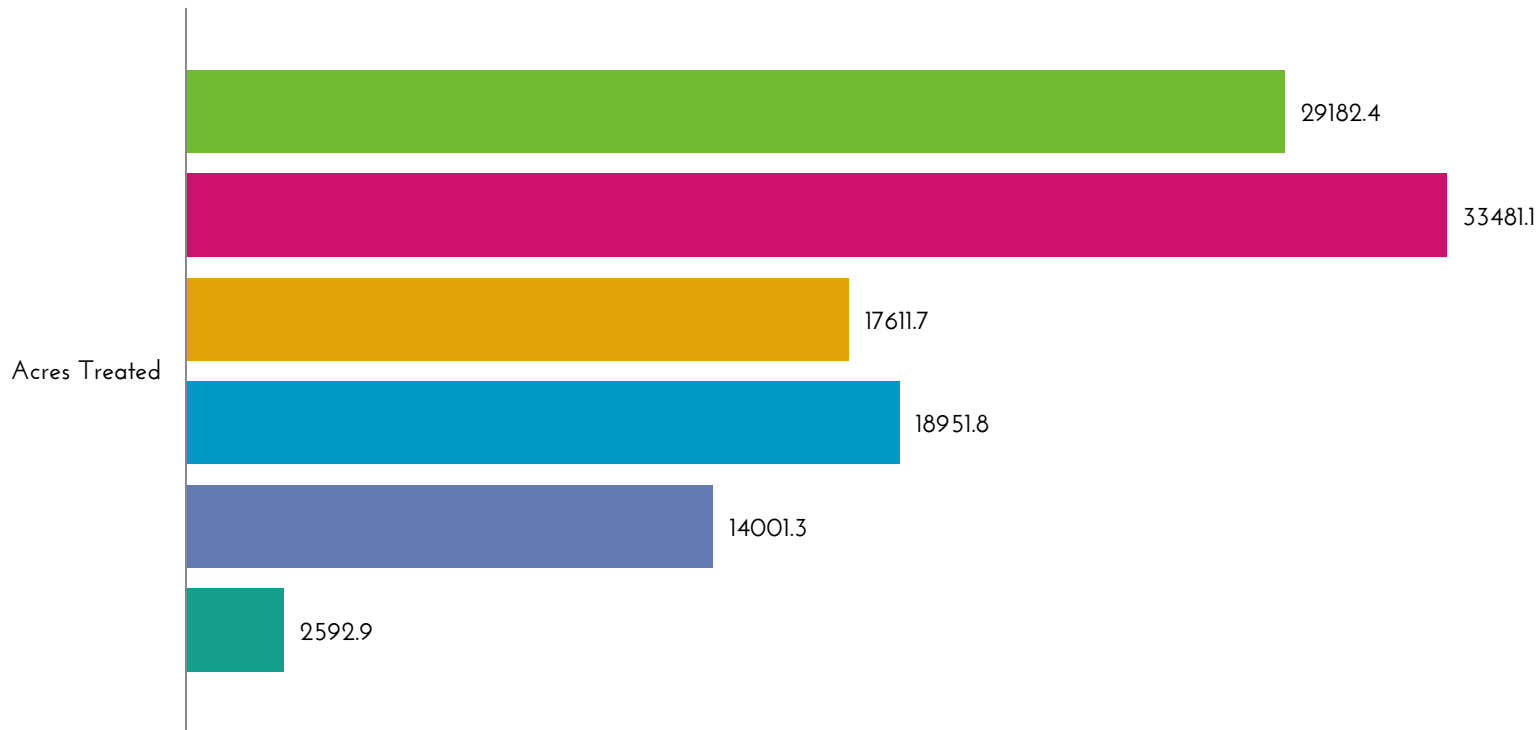
\*Hazardous Fuels Reduction Treatments, Timber Harvests, Activity Silviculture Timber Stand Improvement and Activity SilvicultureReforestation, retrieved from <https://data.fs.usda.gov/geodata/edw/datasets.php>

Preliminary results of restoration treatments in

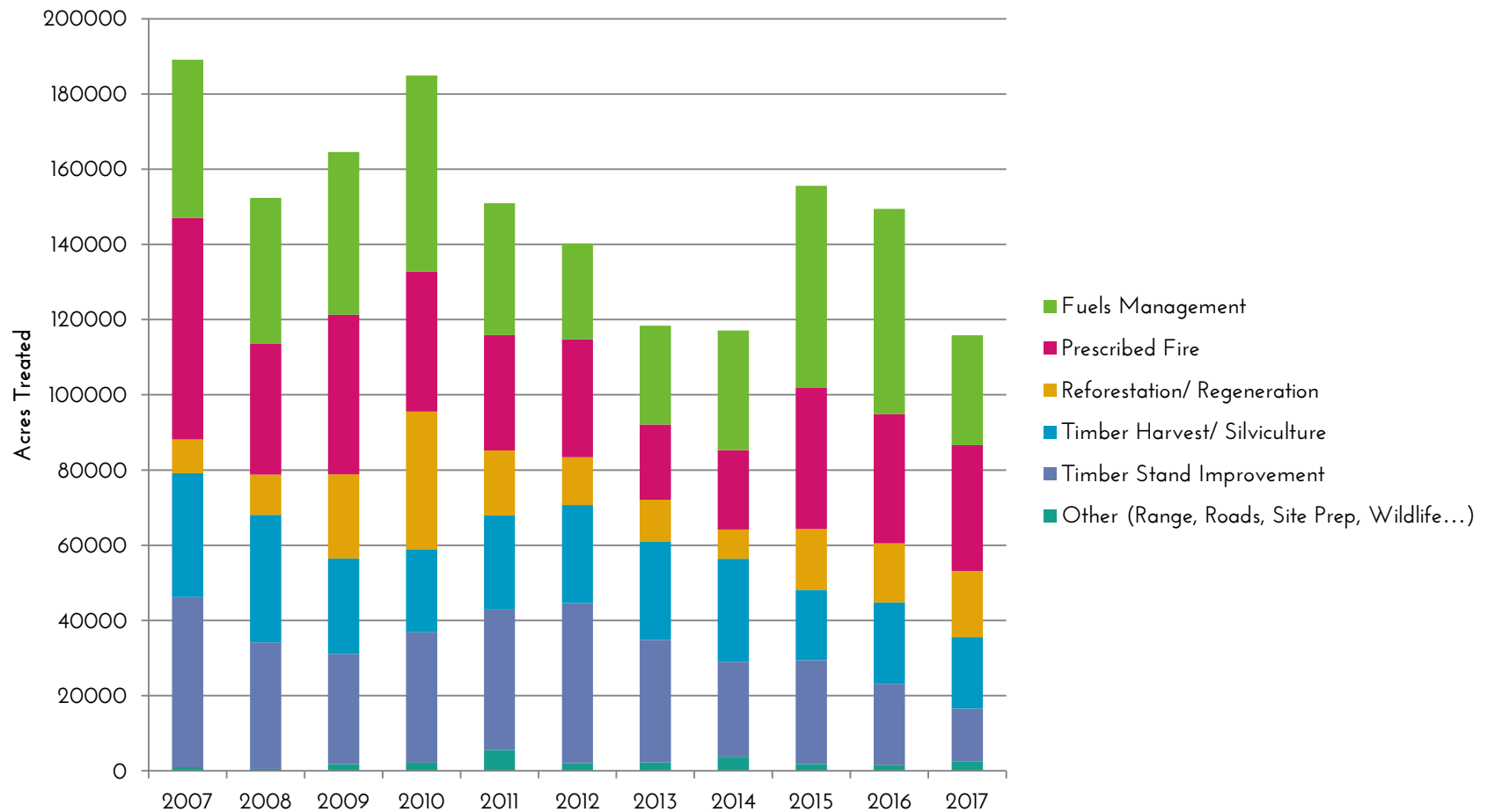
CALIFORNIA

# Activities on all R5 Forests in Fiscal Year 2017

- Fuels Management
- Prescribed Fire
- Reforestation/ Regeneration
- Timber Harvest/ Silviculture
- Timber Stand Improvement
- Other



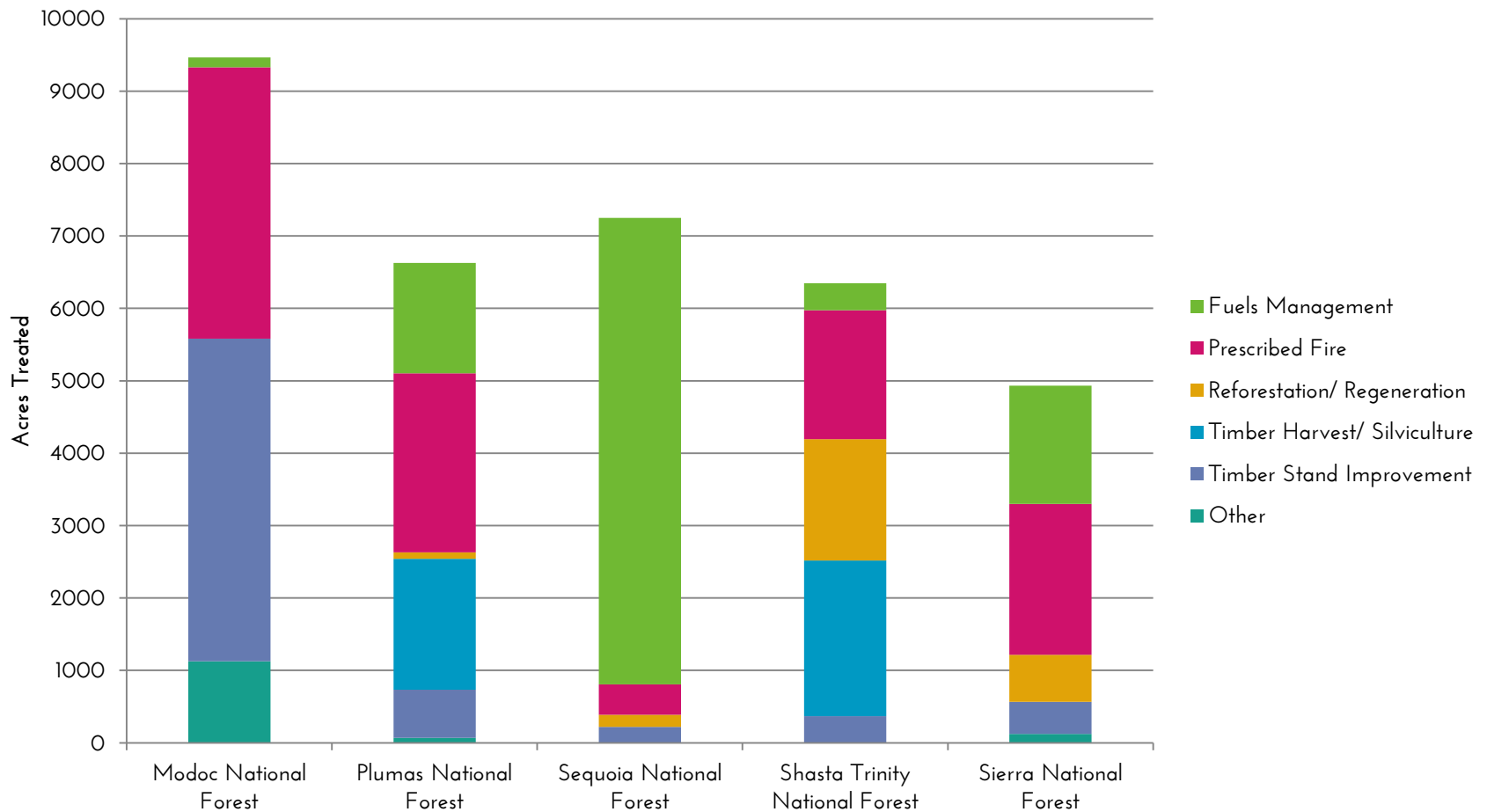
# TEN YEARS OF RESTORATION ACTIVITIES ON CALIFORNIA NATIONAL FORESTS



Preliminary results of restoration treatments in

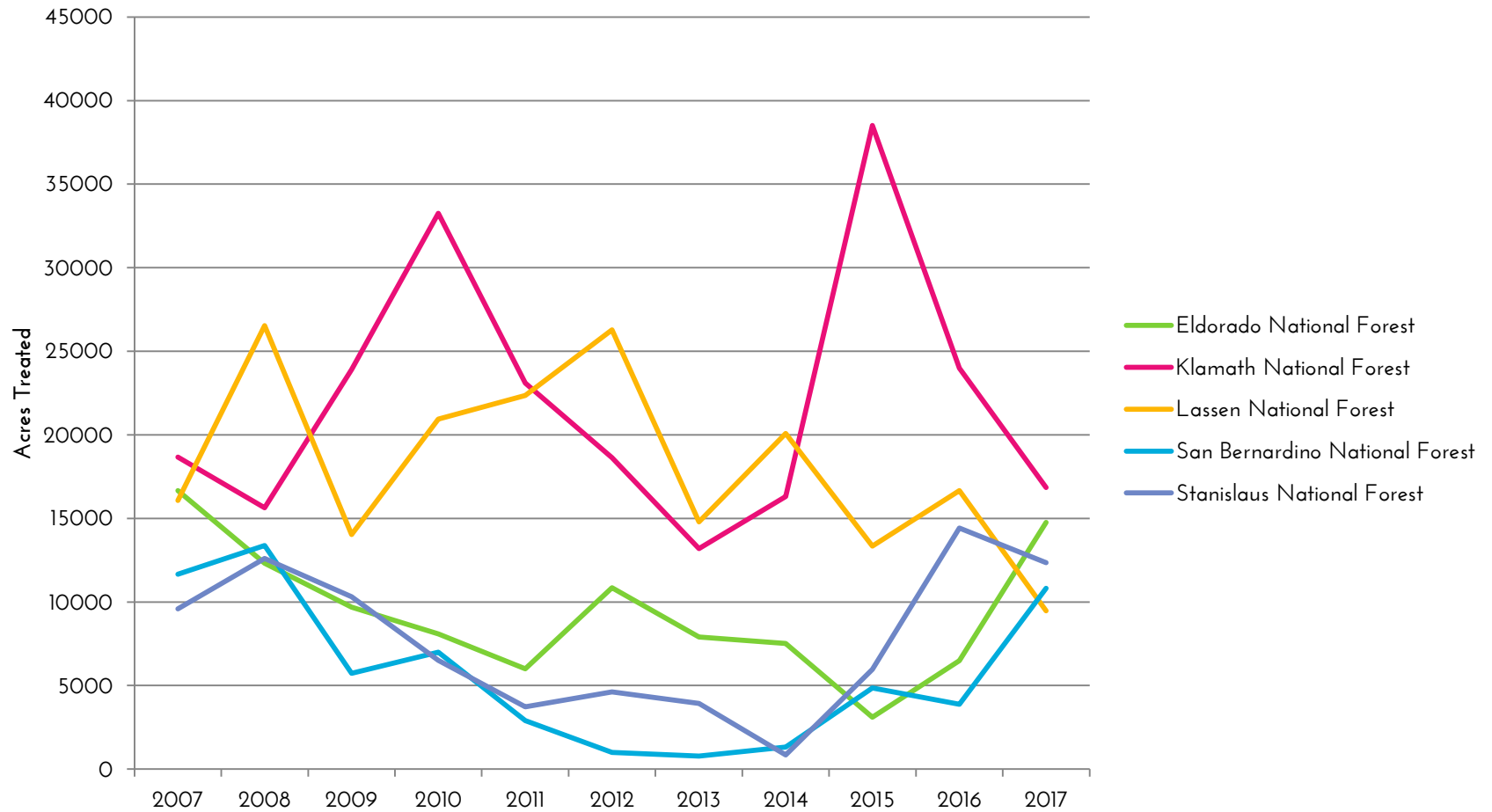
# NATIONAL FORESTS

# TREATMENTS ON NATIONAL FORESTS IN FY17





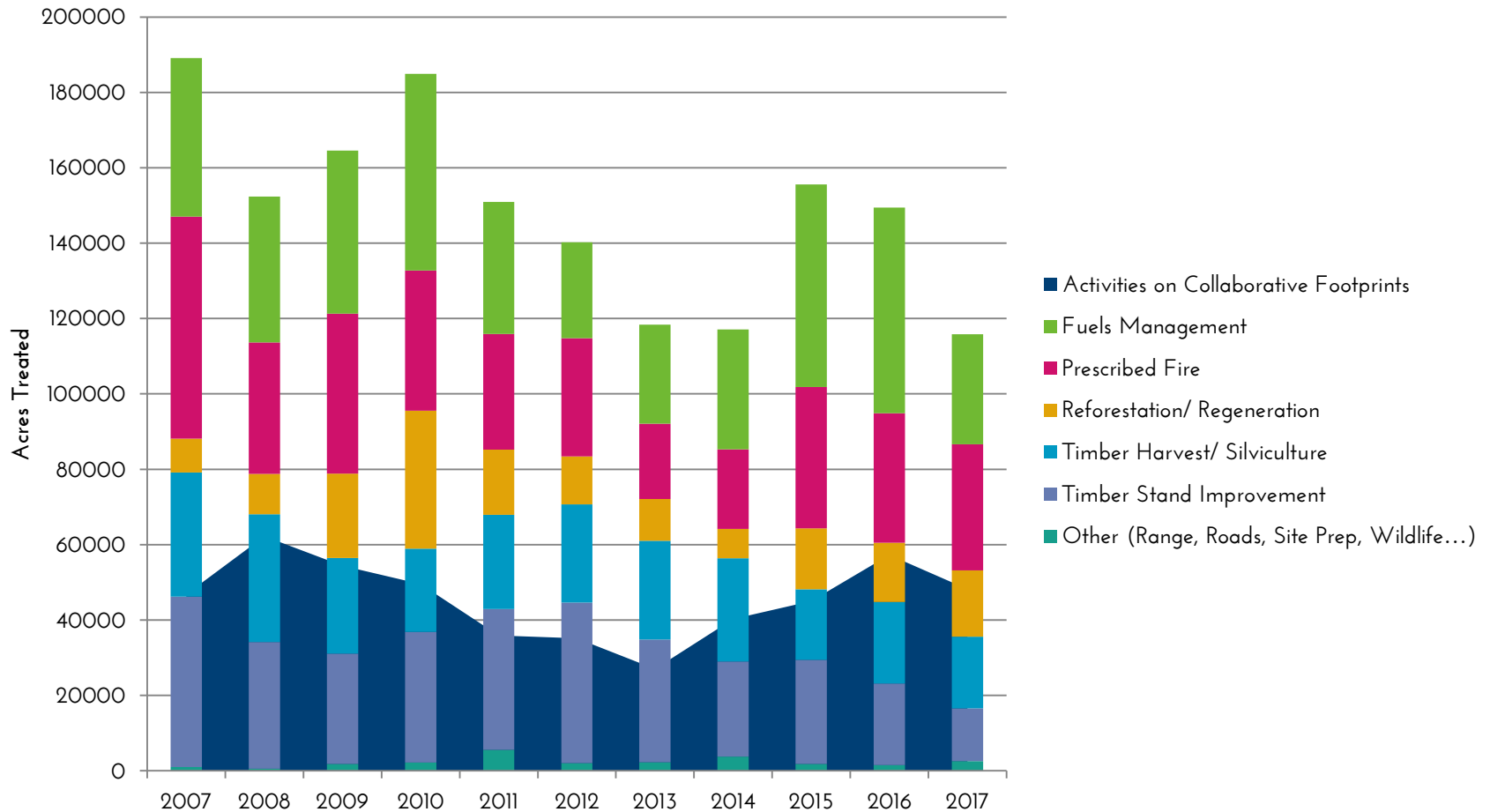
# TEN YEARS OF RESTORATION ON NATIONAL FORESTS



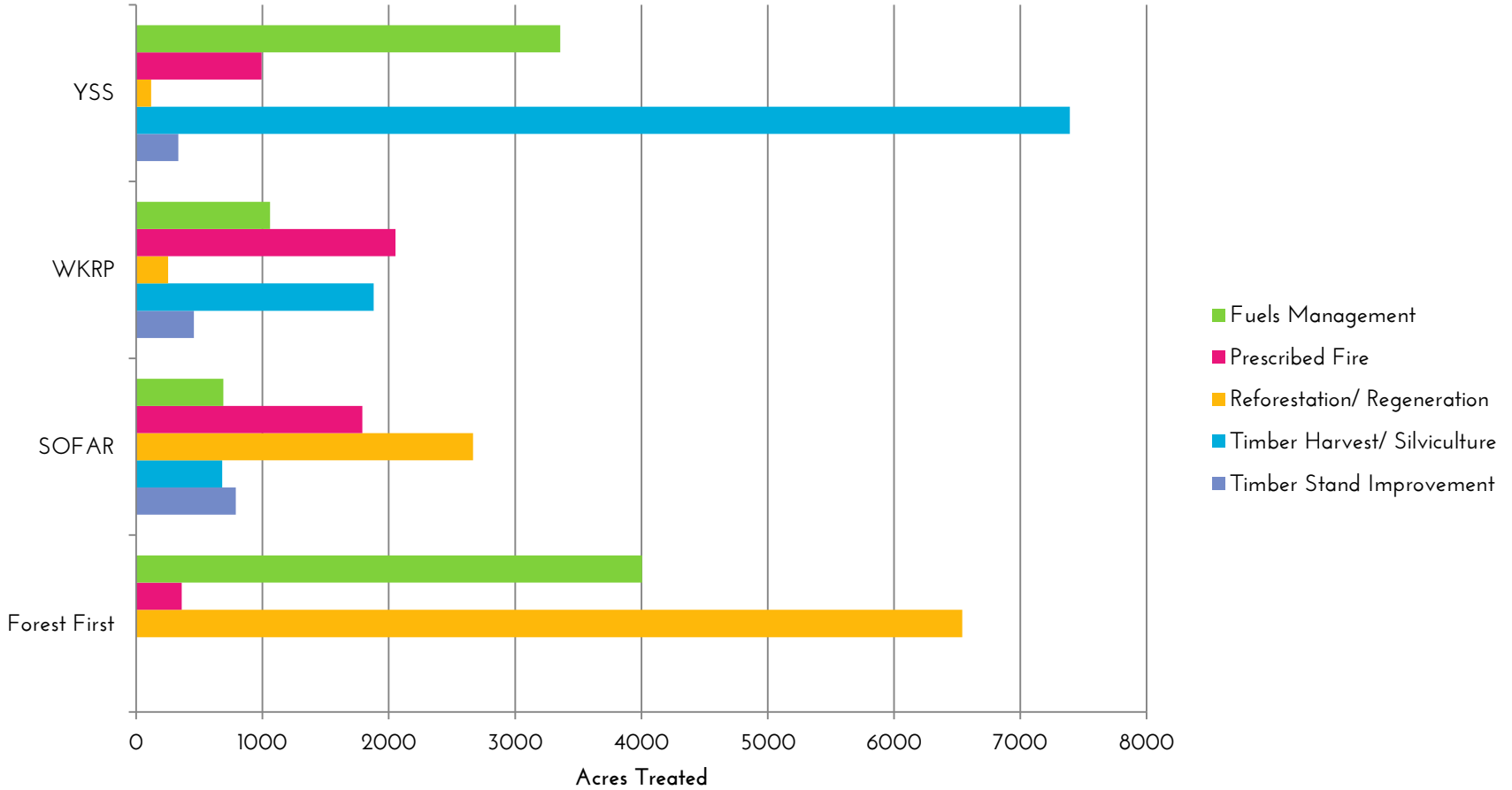
Preliminary results of restoration treatments on

# COLLABORATIVE FOOTPRINTS

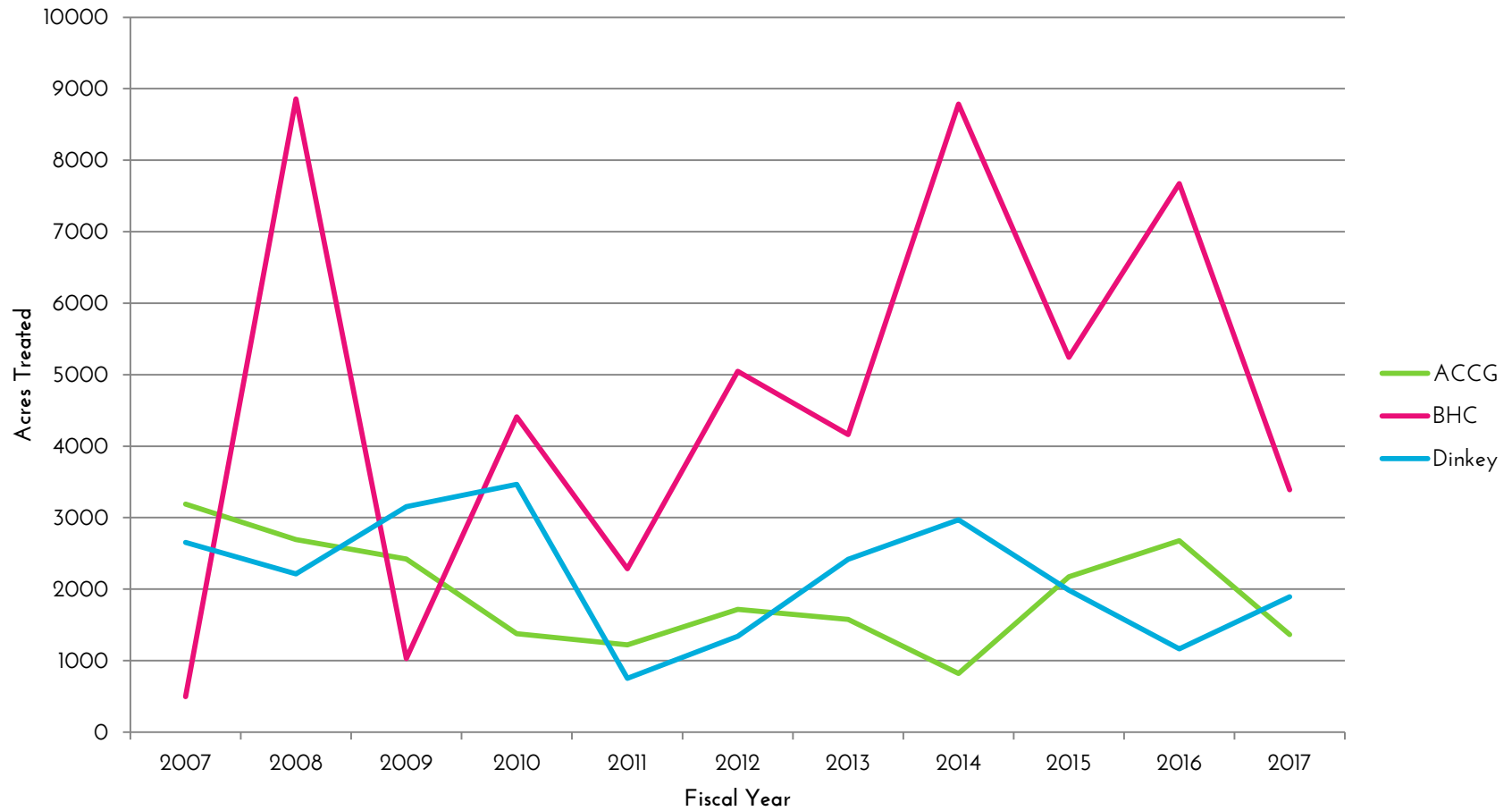
# COLLABORATIVE RESTORATION WORK



# ACTIVITIES ON COLLABORATIVE FOOTPRINTS IN FY17



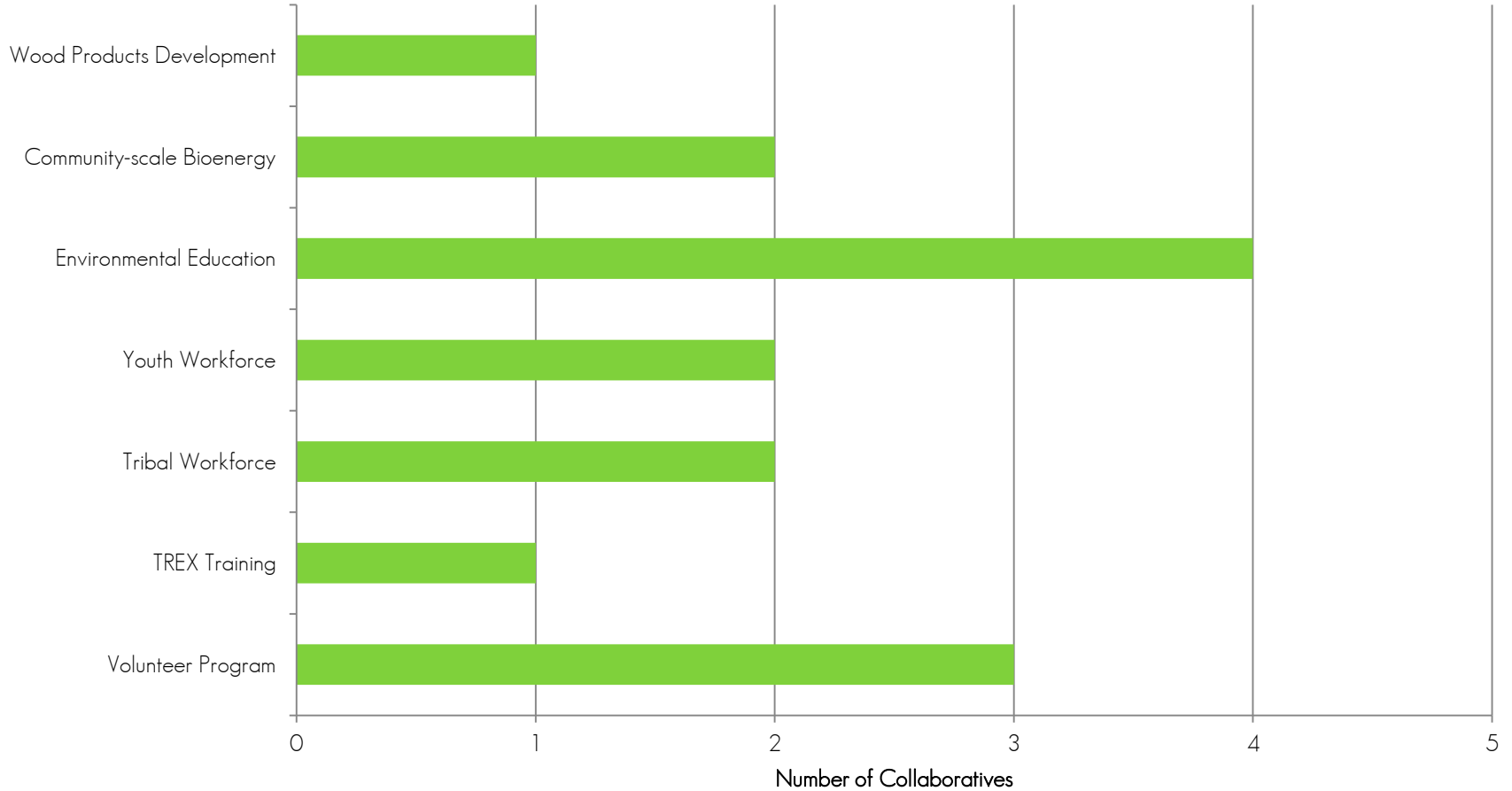
# TREATMENTS ON CFLRS



Results from a survey on the

# ROLE OF COLLABORATIVES

# COMMUNITY PROJECTS & ACTIVITIES



# REPORTED CHALLENGES

- Current major challenges collaboratives face in implementing restoration projects:
  - Inadequate markets (6) and infrastructure (5) for biomass
  - Limited agency personnel (6) and turnover (4)
  - Lack of funding (6)
  - Wildfire (4) and USFS resources directed to wildfire (2)
- Other specific challenges identified:
  - Funding for scoping and facilitation
  - NEPA documents age while waiting for funding
  - Wilderness and roadless areas
  - Land conversion and ownership pattern



# HIGHLIGHTS

- Project highlights from last year:
  - YSS restored 8 meadows, 7 springs and 200 acres of habitat, constructed 6 Great Gray Owl nest structures and planted 20,000 trees
  - SOFAR created a charter and has been developing a set of desired conditions and has entered into agreements with the National Wild Turkey Federation Mule Deer Foundation
  - WKRP's treated 720 acres with prescribed fire through TREFX
  - 3 NEPA decisions made
- Successes in education, meadow restoration, wildlife corridors, fuel reductions in and around WUI communities
- New projects on the horizon, including some collaboratives' first projects
- Project moving forward due to push from the collaborative that would not have been a priority otherwise
- Next steps:
  - Collaboratives are still working on building and maintaining trust
  - Looking at external (non USFS) funding sources
  - Master Stewardship Agreements as a tool

# DISCUSSION

- How are collaboratives tracking projects and success?
- Does this information reflect your perception of restoration work conducted on your forest/collaborative?
- Are there events (such as fires) that explain some of these preliminary results?
- What information would you like to see reported? What other indicators could/should be monitored?
- What does success look like? What would you hope to see reflected after 5 years?

For feedback during the meeting:  
sierrainstitute.scale@gmail.com  
(530) 616-8459

For feedback after the meeting:  
LBurton@SierraInstitute.us  
(530) 284-1022